

.....

JACKSONVILLE CONVENTION CENTER GUIDE

.....



Visit
Jacksonville
Where Florida Begins.
visitjacksonville.com



Learn how at [visitjacksonville.com/meetings](https://www.visitjacksonville.com/meetings)



.....

SO MUCH TO OFFER, ALL IN ONE PLACE.

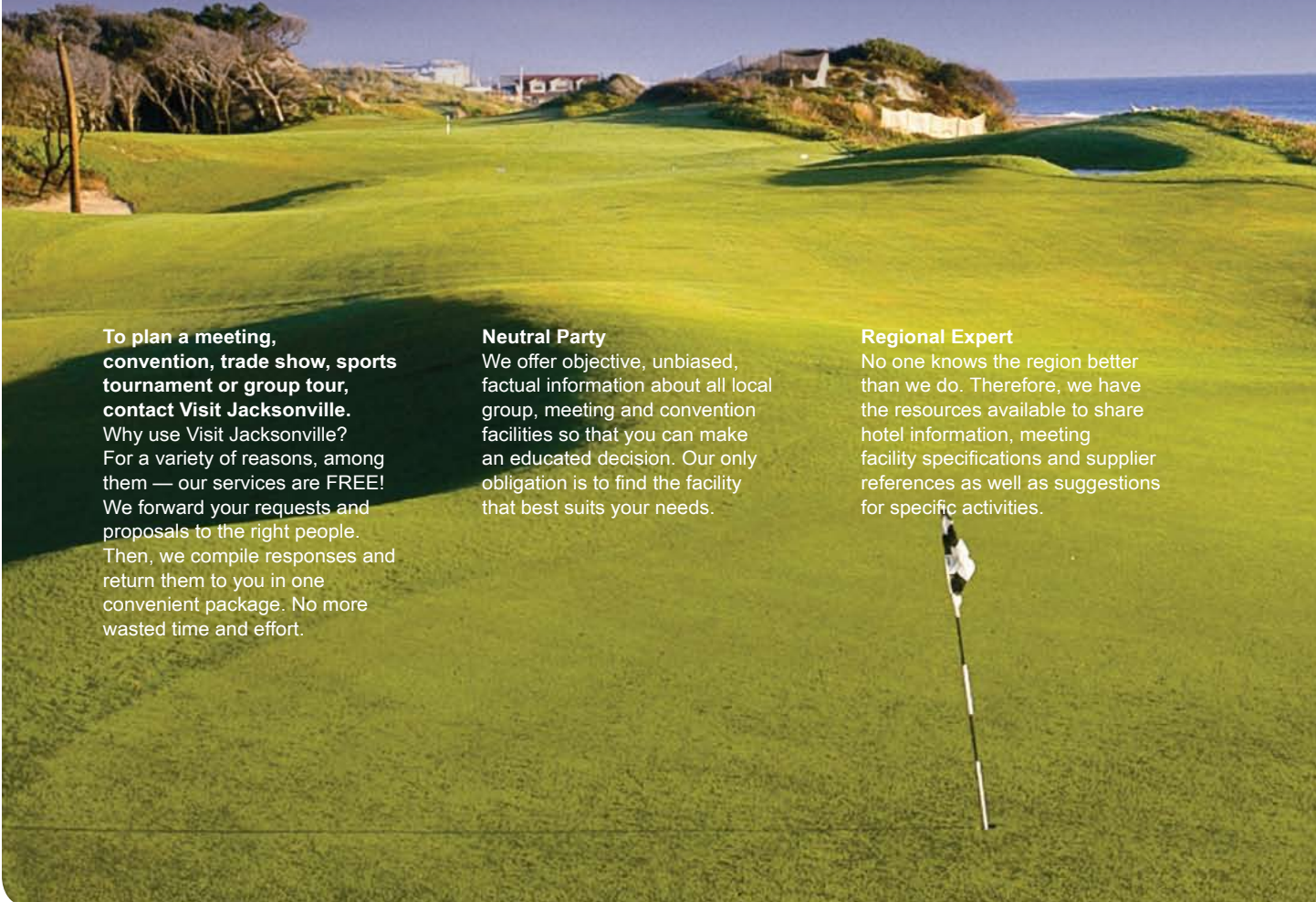
.....

Located on the banks of the St. Johns River, Jacksonville is a vibrant city with the first class amenities and accommodations to make your next convention a success. We're always looking to create the perfect environment for your meeting, which is why we recently added wireless capabilities to our convention facilities such as The Prime F. Osborn III Convention Center and the Times-Union Center for the Performing Arts. With the mild year-round climate and proximity to the Atlantic Ocean, Jacksonville is a wonderful place to enjoy outdoor activities such as golf, tennis, boating, deep-sea fishing or just sunning on one of our sandy beaches. There's also unique shopping, gourmet restaurants, performing arts and museums to round out the activities that are sure to please everyone and make their visit memorable.

To plan a meeting, convention, trade show, sports tournament or group tour, contact Visit Jacksonville.
Why use Visit Jacksonville?
For a variety of reasons, among them — our services are FREE! We forward your requests and proposals to the right people. Then, we compile responses and return them to you in one convenient package. No more wasted time and effort.

Neutral Party
We offer objective, unbiased, factual information about all local group, meeting and convention facilities so that you can make an educated decision. Our only obligation is to find the facility that best suits your needs.

Regional Expert
No one knows the region better than we do. Therefore, we have the resources available to share hotel information, meeting facility specifications and supplier references as well as suggestions for specific activities.



- More than 100 non-stop daily flights
- The largest facility offers over 275,000 square feet of convention center space
- Over 16,000 hotel rooms
- Unique venues and event spaces for groups from 10 to 10,000
- Easy access by highways, water-taxis, skyway rail, buses and trolleys



Destination Management Services

In addition to providing information to assist you in site selection, our Services Department offers a housing bureau and puts you in touch with firms specializing in transportation, entertainment, dining, registration and other group and convention-related needs.

Meeting and Planning Services

We check hotel availability for your preferred dates, distribute meeting specifications to area hotels, collect proposals on your behalf, conduct personalized site inspections, provide promotional materials to encourage attendance and much, much more.

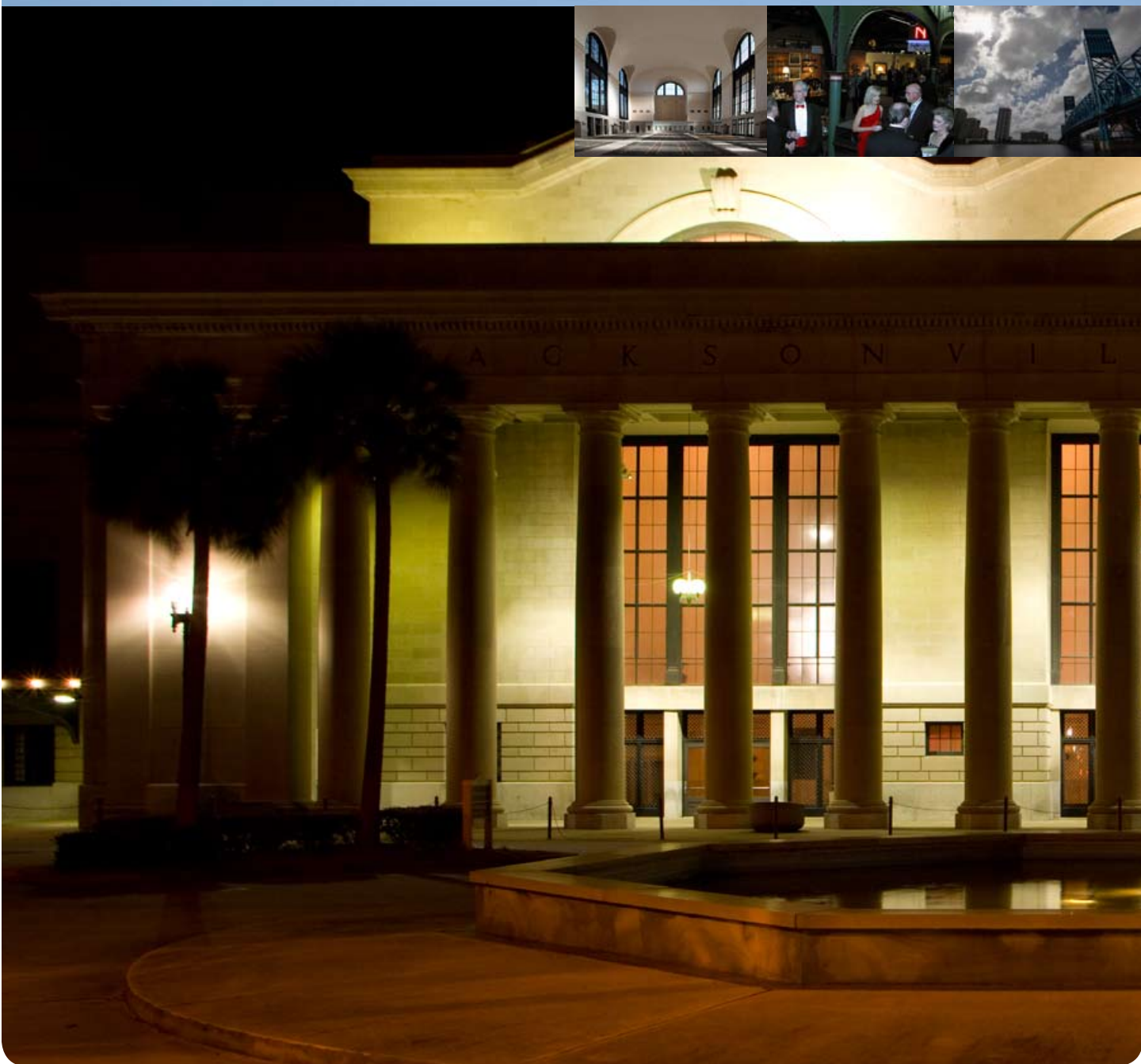
Meetings-Specific Web Site

Visit Jacksonville's meeting planner's site is designed specifically with the planner's needs in mind. We also offer microsites where we will develop a Web site specifically for your group showcasing the group hotel(s), meeting details, area events, maps and much more! All free of charge!

Learn how at visitjacksonville.com/meetings



.....
PRIME F. OSBORN III
CONVENTION CENTER
.....



Grand historic architecture and state-of-the art technology combine to create North Florida's premiere convention center. Located in Downtown Jacksonville, the Prime F. Osborn III Convention Center offers 275,000 square feet of flexible meeting space and wireless capabilities, making it the perfect setting for conventions, trade shows, meetings and banquets. The Prime Osborn was once the city's train terminal, known for moving people through Florida and the Eastern seaboard. It continues the great tradition of first-class service, quality and value as a meeting venue. Just minutes from the Jacksonville International Airport and less than a mile from over 1,000 hotel rooms, the Prime Osborn is the **PRIME** setting for any event.

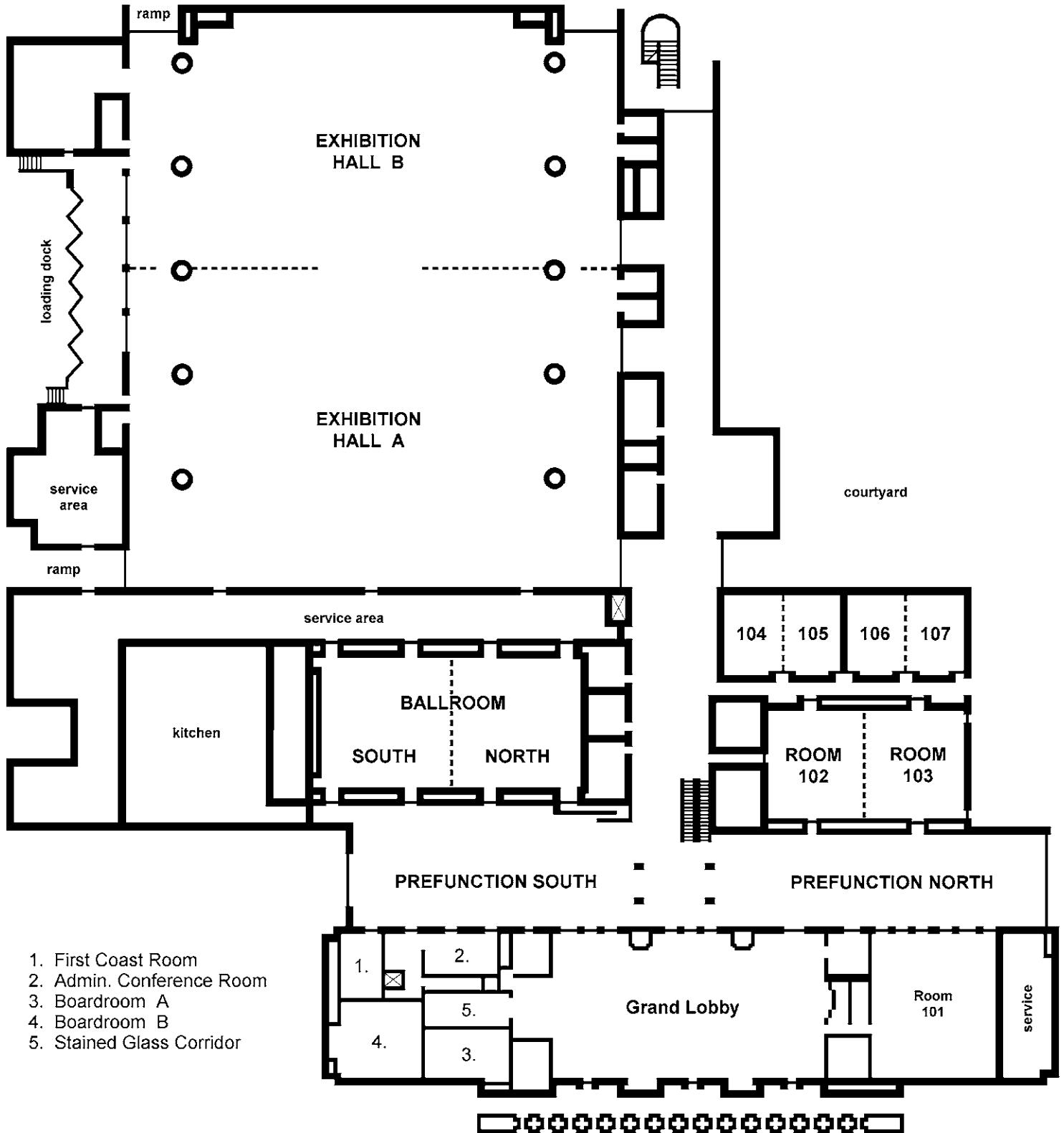


PRIME F. OSBORN III CONVENTION CENTER: FUNCTION AREA STATISTICS

Room Name	Dimensions Length x Width (Ft.)	Area (Sq. Ft.)	Ceiling Height (Ft.)	Theater	Conference	Classroom	Reception	Banquet Rds/10	Hollow (Sq.)	10'x10' Booth
GROUND FLOOR										
Exhibit Hall A	238 x 180	42,804	32.5	3,100	–	1,600	2,800	2,250	–	252
Exhibit Hall B	238 x 150	35,700	32.5	2,500	–	1,200	2,600	2,100	–	196
Combined Exhibit Hall	238 x 330	78,540	32.5	5,600	–	2,100	6,000	4,000	–	448
Ballroom North	65 x 78	5,070	22.5	475	–	250	360	310	75	–
Ballroom South	65 x 78	5,070	22.5	475	–	250	360	310	75	–
Combined Ballroom	130 x 78	10,140	22.5	950	–	540	800	525	–	52
Room 101	63 x 73	4,547	30	400	–	150	350	260	75	24
Room 102	49 x 61	2,989	20	295	–	105	230	190	65	–
Room 103	49 x 61	2,989	20	295	–	105	230	190	65	–
Rooms 102–03	98 x 60	5,978	20	575	–	240	490	400	–	30
Room 104	39 x 28	1,137	12.5	95	12	40	70	50	36	–
Room 105	39 x 30	1,230	12.5	100	12	40	70	50	36	–
Rooms 104–05	58 x 39	2,367	12.5	188	–	75	150	120	60	–
Room 106	39 x 30	1,240	12.5	100	12	40	70	50	36	–
Room 107	39 x 30	1,158	12.5	95	12	40	70	50	36	–
Rooms 106–07	60 x 39	2,398	12.5	188	–	75	150	120	60	–
Grand Lobby	132 x 72	10,008	75	950	–	425	900	630	–	46
Boardroom A	42 x 29	1,218	12	–	20	–	–	–	20	–
Boardroom B	43 x 41	1,850	30	150	30	70	140	100	36	–
Stained Glass Parlor	39 x 18	694	22 pk	–	12	–	–	–	24	–
First Coast Room	39 x 20	780	11	–	12	–	–	–	–	–
Conference Room	30 x 18	540	11	–	16	–	–	–	–	–
Prefunction North	161 x 50	8,050	19 pk	–	–	–	450	360	–	24
Prefunction South	139 x 50	6,950	19 pk	–	–	–	400	250	–	30
MEZZANINE	100 X 40	3,650	24 +	–	–	–	250	160	–	–
Room 201	(3) offices	–	–	–	–	–	–	–	–	–
Room 202	–	–	–	–	–	–	–	–	–	–
Room 203	39 x 23	850	11	65	12	40	30	30	24	–
Room 204	29 x 32	895	11	70	12	24	40	30	20	–
Room 205	29 x 32	895	11	70	12	24	40	30	20	–
Rooms 204–05	58 x 32	1,790	11	140	–	60	90	80	52	–
Room 206	29 x 32	895	11	70	12	24	40	30	20	–
Room 207	29 x 32	895	11	70	12	24	40	30	20	–
Rooms 206–07	58 x 32	1,790	11	140	–	60	90	80	52	–
Room 208	26 x 32	825	11	65	12	24	40	30	20	–
Room 209	26 x 32	825	11	65	12	24	40	30	20	–
Rooms 208–09	52 x 32	1,650	11	130	–	60	90	80	52	–
Room 210	29 x 32	895	11	70	12	24	40	30	20	–
Room 211	29 x 32	895	11	70	12	24	40	30	20	–
Rooms 210–11	58 x 32	1,790	11	140	–	60	90	80	52	–
Pavilion (Grass)	225 x 146	32,850	Open	–	–	–	–	–	–	–
Flagler Terrace	110 x 100	11,000	Open	70	–	–	500	550	–	–
Totals	Inside Outside Meeting Space	156,184 42,500 48,750	Note: All maximums shown leave very limited space for presenter equipment. Staging and AV requirements may reduce seating capacity							

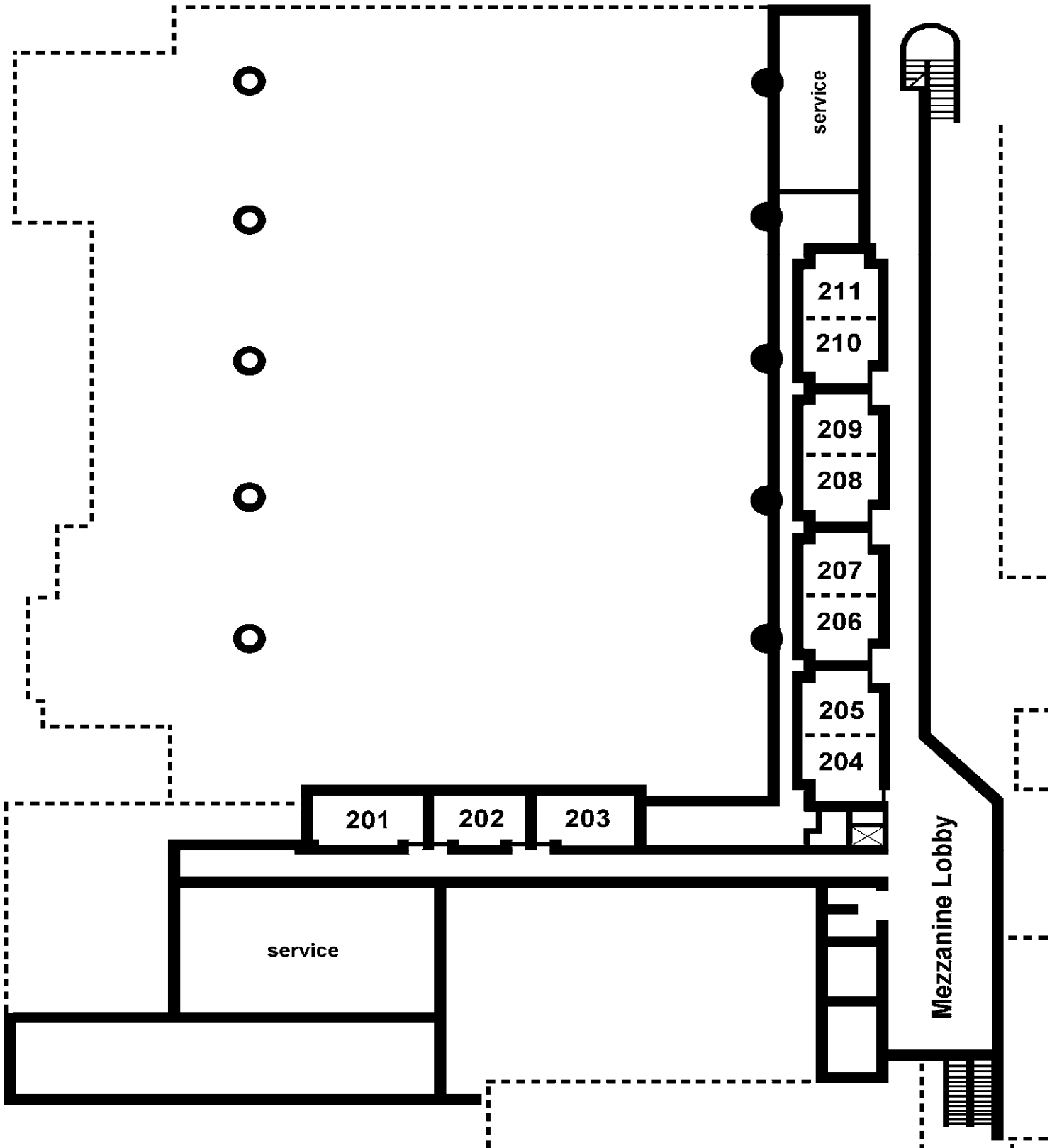
PRIME F. OSBORN III CONVENTION CENTER

(Main Level)



PRIME F. OSBORN III CONVENTION CENTER

(Mezzanine Level)



PRIME F. OSBORN III CONVENTION CENTER AND ITS OFFERINGS

GENERAL BUILDING INFORMATION:

- 275,000 Gross s.f. of space
- 48,000 s.f. carpeted meeting space in 22 rooms
- 78,500 s.f. contiguous exhibit space, 100,000 total
- 450 10'x10' booths in contiguous space, 550 total
- 19,000 s.f. pre-function area plus 11,000 s.f. terrace
- 31,500 s.f. fenced grass pavilion
- 10,000 s.f. Grand Lobby with 75' vaulted ceiling
- 860 Parking spaces
- Two (2) Executive Boardrooms and VIP Suite
- Six (6) bay loading docks and two (2) on-grade hall entrances
- Wireless Capabilities

LOADING DOORS:

Exhibit Hall Door 1: Grade-entry rollup (Hall A), 15'H x 24'9"W

Doors 2, 3, 4, 5: Loading Dock, rollups, 14'H x 20"W

Door 6: Grade-entry rollup (Hall B), 15'H x 24'9"W

Door 11, Ballroom: 7'10"H x 7'7"W

Prefunction South Wing Doors: 10'9"H x 9'2"W

Grand Lobby, Interior Rollup Door: 11'4"H x 9'6"W

Room 101, Interior Rollup Door: 11'4"H x 6'3"W

Room 102, Interior Wing Doors: 7'11"H x 7'11"W

Room 104, Interior Pocket Door: 8'4"H x 8'4"W

FLOOR LOADING:

Exhibit Hall: 360 lbs/psf

Meeting Rooms: 360 lbs/psf

Old Terminal: 250 lbs/psf

LIGHTING:

Exhibit Hall, Primary: Metal halide, zoned

Secondary: Quartz halogen, dimmable

Ballroom, Primary: Metal halide, zoned.

Secondary: Incandescent Chandeliers, Lutron Control

Room 101, Primary: Metal halide, zoned.

Secondary: Incandescent Chandeliers, Sconces, dimmable

Rooms 102-103, Primary: Metal halide, zoned.

Secondary: Incandescent downlights

Grand Lobby, Primary: Incandescent ceiling floods, dimmable

Secondary: Incandescent wall sconces, dimmable

Meeting Rooms, Primary: Fluorescent, zoned

Secondary: Incandescent downlights, dimmable



UTILITIES:

Compressed Air: at selected locations in Exhibit Hall by prior request. Average 60 psi

Electrical: 120VAC, 208VAC in 30'x30' floor grid, perimeter boxes Up to 480VAC, 400A by request.

Plumbing: Domestic water and drain service at selected Exhibit Hall locations

Telecommunications: The Exhibit Hall and meeting rooms are wired for Cat 3 and Cat 5 HSD

Rigging: The Center's Exhibit Hall Rigging Grid is available on request. Rigging plots may be required.

Columns: The Exhibit Hall span between column centers is 180' north-south; and 60' east-west. The maximum column-free area is 330' x 180' (59,400 sq. ft.)

TRANSPORTATION, PARKING AND OTHER INFORMATION:

Located on 22 acres, the Prime F. Osborn III Convention Center has on-site parking for nearly 1,000 cars, with 4,000 additional spaces within easy walking distance. Public transportation is provided through our bus and trolley system. The Skyway can also whisk visitors from Jacksonville's main Downtown business centers and from across the St. Johns River. For your convenience, ATMs, telephones with volume enhancement and on premise security are all available to make your event enjoyable and safe.

.....
TIMES-UNION CENTER
FOR THE PERFORMING ARTS
.....



A picture-perfect setting for corporate meetings and receptions located in the heart of Downtown Jacksonville, The Times-Union Center for the Performing Arts features a spectacular river view and access to premium hotels in the Jacksonville entertainment district. Set the stage for your next meeting or corporate event with elegance, convenience and state-of-the-art audio/visual production in a most unique setting. Take advantage of one of our three theaters with fixed seating for up to 3,000 guests. Personally design your event throughout the 20,000 square feet of lobby and reception space or be the star of the show by creating a one-of-a-kind banquet or reception On Stage at the Times-Union Center!



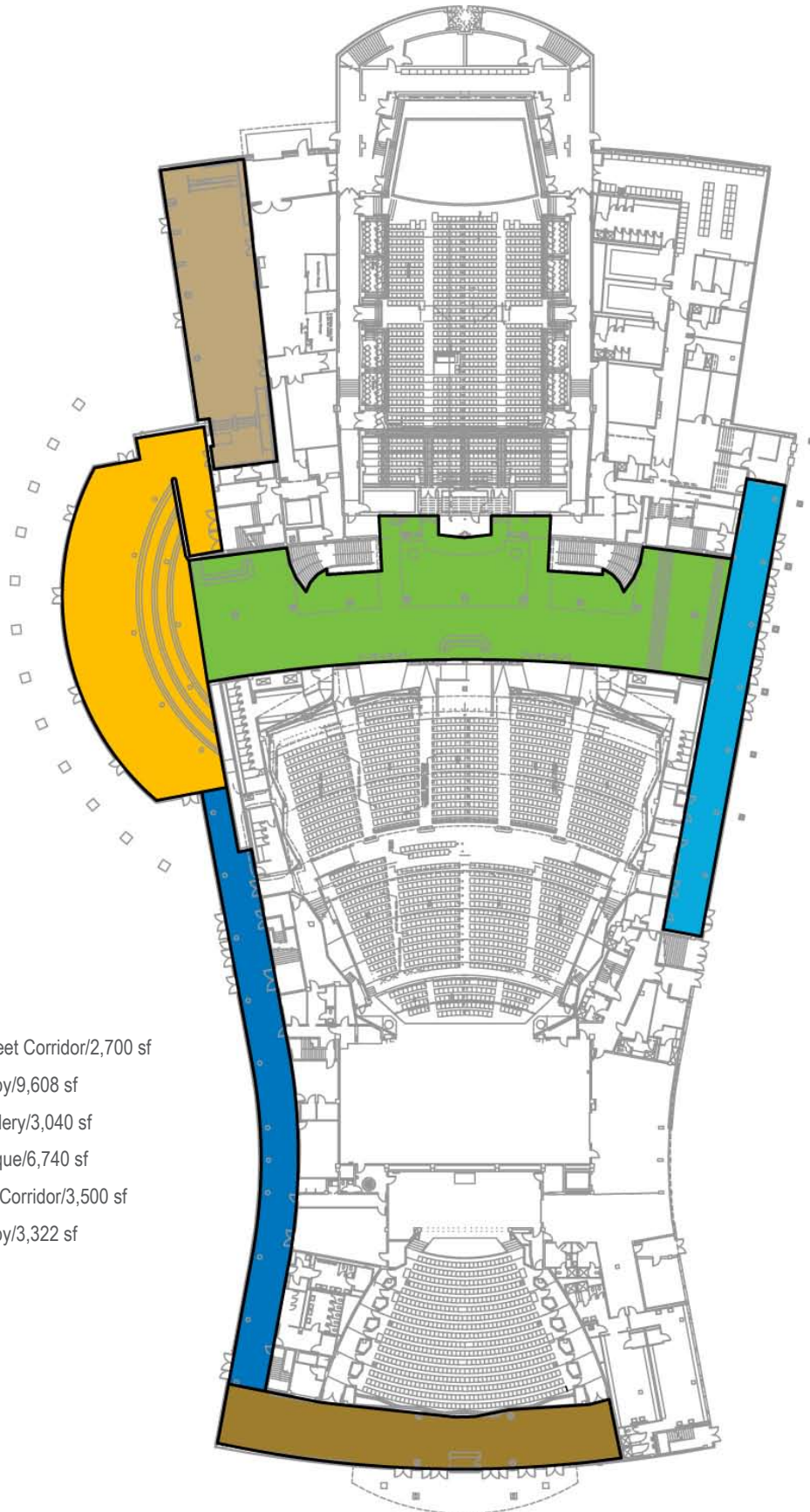
TIMES-UNION CENTER FOR THE PERFORMING ARTS DIMENSIONS

Room Name	Dimensions	Square Footage	Theater	Classroom	U-Shape	Reception	Banquet	Ceiling Height (Ft.)
Moran Theater	128 x 128	16,300	2,936	–	–	–	–	52
Jacoby Hall	82 x 110	9,000	1,874	–	–	–	–	50
Terry Theater	68 x 58	3,800	602	–	–	–	–	26
Shircliff Lounge	64 x 29	1,850	100	100	25	200	124	–
Davis Gallery	105 x 31	3,200	200	150	50	250	175	–
South Marque	133 x 30	3,900	–	–	–	350	280	50
Lower Lobby	184 x 48	8,800	–	–	–	550	–	–
Upper Lobby	244 x 48	11,000	–	–	–	500	300	–



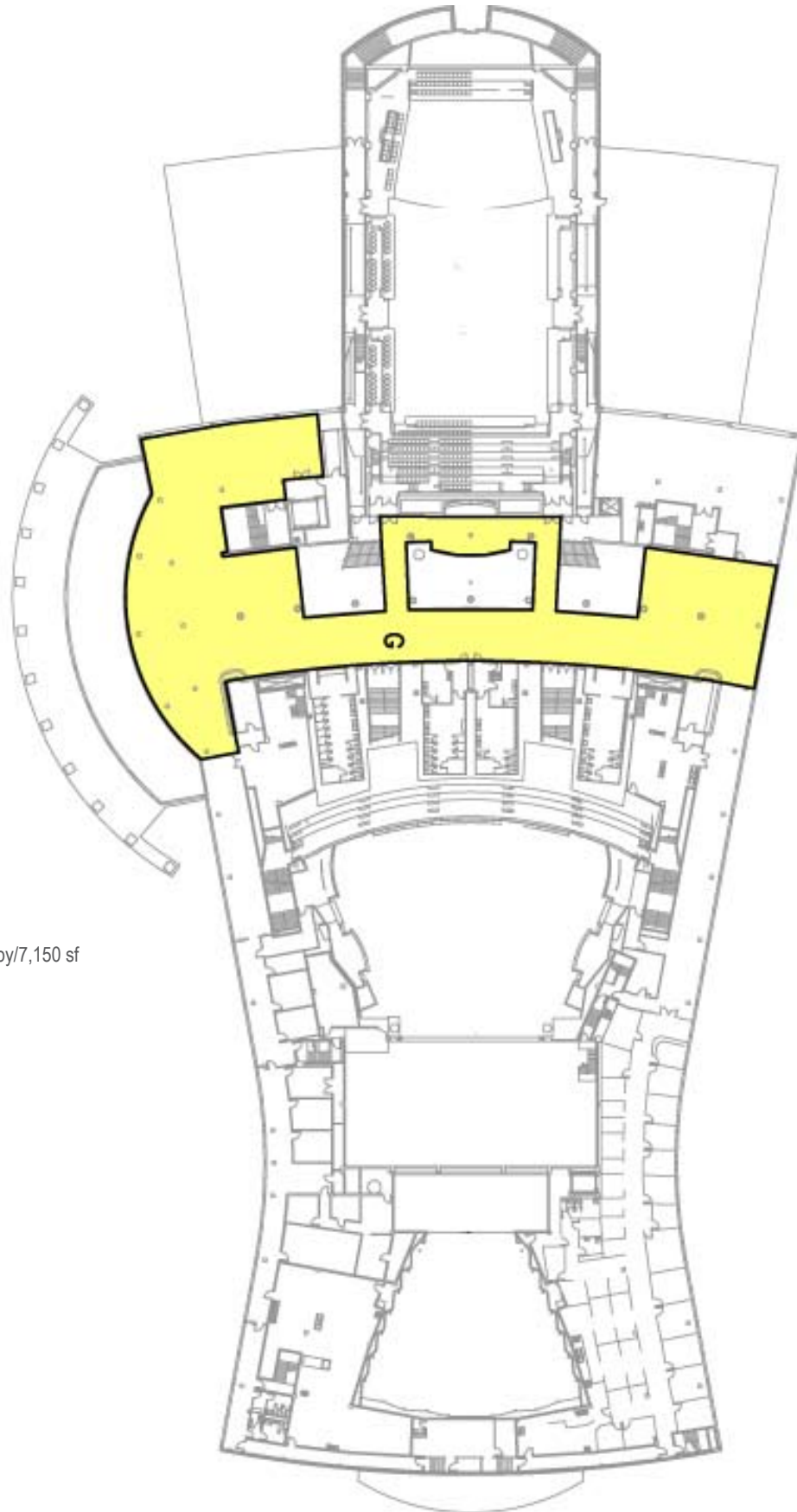
TIMES-UNION CENTER FOR THE PERFORMING ARTS

(First Floor)



- A) Water Street Corridor/2,700 sf
- B) Main Lobby/9,608 sf
- C) Davis Gallery/3,040 sf
- D) Uble Marque/6,740 sf
- E) Riverside Corridor/3,500 sf
- F) Terry Lobby/3,322 sf

TIMES-UNION CENTER FOR THE PERFORMING ARTS (Second Floor)



■ G) Hicks/Shircliff Lobby/7,150 sf

THE TIMES-UNION CENTER FOR THE PERFORMING ARTS AND ITS OFFERINGS

Orchestra Level Seating: 1,847
Loge and Balcony Seating: 1,108
Box Seating: 24
Total Seating Capacity: 2,979

Dressing Rooms: Two (2) Star Dressing Rooms,
Two (2) Six Person Capacity, Two (2) 20 Person Capacity
Chorus Rooms

Mix Position: 71' from House Curtain (20' wide by 8' deep) House
Left of Center (unfixed seating) Control Booth: 130' from House
Curtain, Center Back Wall

Spotlight Booth: 150' from House Curtain Stage:
48' deep from Plaster Line

96' from Stage Left Wall to Stage Right Wall

Proscenium: 53' 9" wide by 32' high

Orchestra Pit: Two Sections, Hydraulic

**Distance from House Curtain to Front Edge of
apron:** 21' at Center

Loading Doors: Two (2) Trailer Height (11' 6" wide by 11' 8" high)
30' from Stage Right

Fly Space: From Deck to Grid: 81'

Working Batons: 60 Pipes (including House Curtain),
64' long, 72' of Travel

TECHNICAL INFORMATION

Wireless Capabilities

General Lighting Inventory Control: E. T. C. Obsession 600

Dimmers: Sensor Dimmers

Lighting Instruments—

Source 4 Models:

Forty (40) 450, Sixty (60) 436, Sixty (60) 426, Sixty (60) 419,
Ten (10) 410, Four (4) 405

Lekos—

Strand Models:

Eighteen (18) 750 EHF / 4.5x6.5

Forty (40) 750 EHF 6x9

Ten (10) 750 EHF 6x12

Fresnels:

Altman Models:

Eighteen (18) 175Q

Twenty Four (24) 165Q

PAR 64: Sixty (60)

Source 4 PAR: Eighteen (18)

Strip Lights:

Twelve (12) L & E Model PAR 56 / 3 circuit – 12 lamp

Twenty Four (24) Mini Strip MR – 16 / 3 circuits – 30 lamp

Seven (7) 3 cell / 1K per circuit Cyc Lights

Follow Spotlights:

Four (4) 2,000w Strong Super Troupers (Moran Theater)

Two (2) 1,600w Super Troupers (Jacoby Hall)

One (1) HMI 757 Spotlight (Terry Theater)



SOUND INVENTORY

MORAN THEATER

Mixing Console: Yamaha M7CL48

House Mobile Racks:

Cassette Recorder: Tascam 112MKII

Compact Disc Player: Tascam CD-401 MKII

Digital Multi-Effects Unit 1: Lexicon Reflex

Digital Multi-Effects Unit 2: Yamaha SPX-900

Two (2) Dual Gate / Expander: Drawmer DS201B

Quad Compressor / De-esser: BSS DRP404

Two (2) Dual Compressor / Limiter / Gate: DBX 166A

Loudspeakers (FOH):

Three (3) Clusters (L, C, R) Mono or Stereo

High End: JBL 2446 H Compressor Drivers with JBL Horns

Mids: ElectroVoice TL 12

Subs: JBL AS1028

JACOBY SYMPHONY HALL

Mixing Console: Crest GT (32 inputs / 8 sends)

House Mobile Racks:

Cassette Recorder: Tascam 112MKII House Mix Mobile

Racks:

Cassette Recorder: Tascam 112MKII

Compact Disc Player: Tascam CD-401 MKII

Digital Multi-Effects Unit: Yamaha SPX-900

Dual Gate / Expander: Drawmer DS201B

Quad Compressor / De-esser: BSS DRP404

Dual Compressor / Limiter / Gate: DBX 166A

TRANSPORTATION, PARKING AND OTHER INFORMATION:

Located on the St. Johns River in Downtown Jacksonville, the Times-Union Center has over 5,000 parking spaces available within easy walking distance. Public transportation is provided through our bus and trolley system as well as the water taxi which can take visitors to and from across the St. Johns River. For your convenience, ATMs, Telephones with volume enhancement and on premise security are all available to make your event enjoyable and safe.

Whatever your needs are, let our meeting specialists assist you in creating the perfect trip for your group, all free of charge. To learn more, go to www.visitjacksonville.com/meetings or call **800-340-4444**.

